

UAF NANOOK EV

Simplifying Electric ⚡





Overview



- Design Concept
- Snowmobile Operator Perspective
- Snowmobile Dealer/Outfitter Perspective
- Environmental Perspective



Design Concept



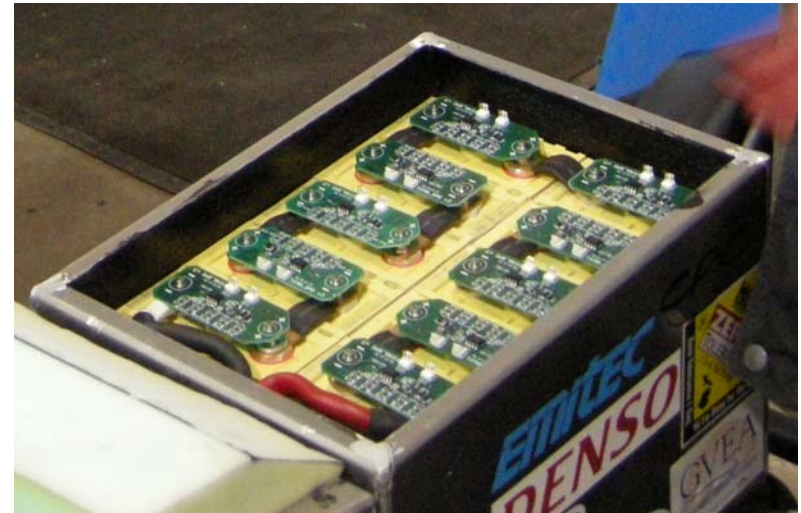
- Maximize range to maximize uses
- Minimize cost by using parts that are:
 - Easily obtainable
 - Affordable
 - Available
- Novel Simplicity



Operator Perspective



- Range
 - 8.9 kWh LiFePO₄ battery pack
 - 16.6 mile range at 20 mph

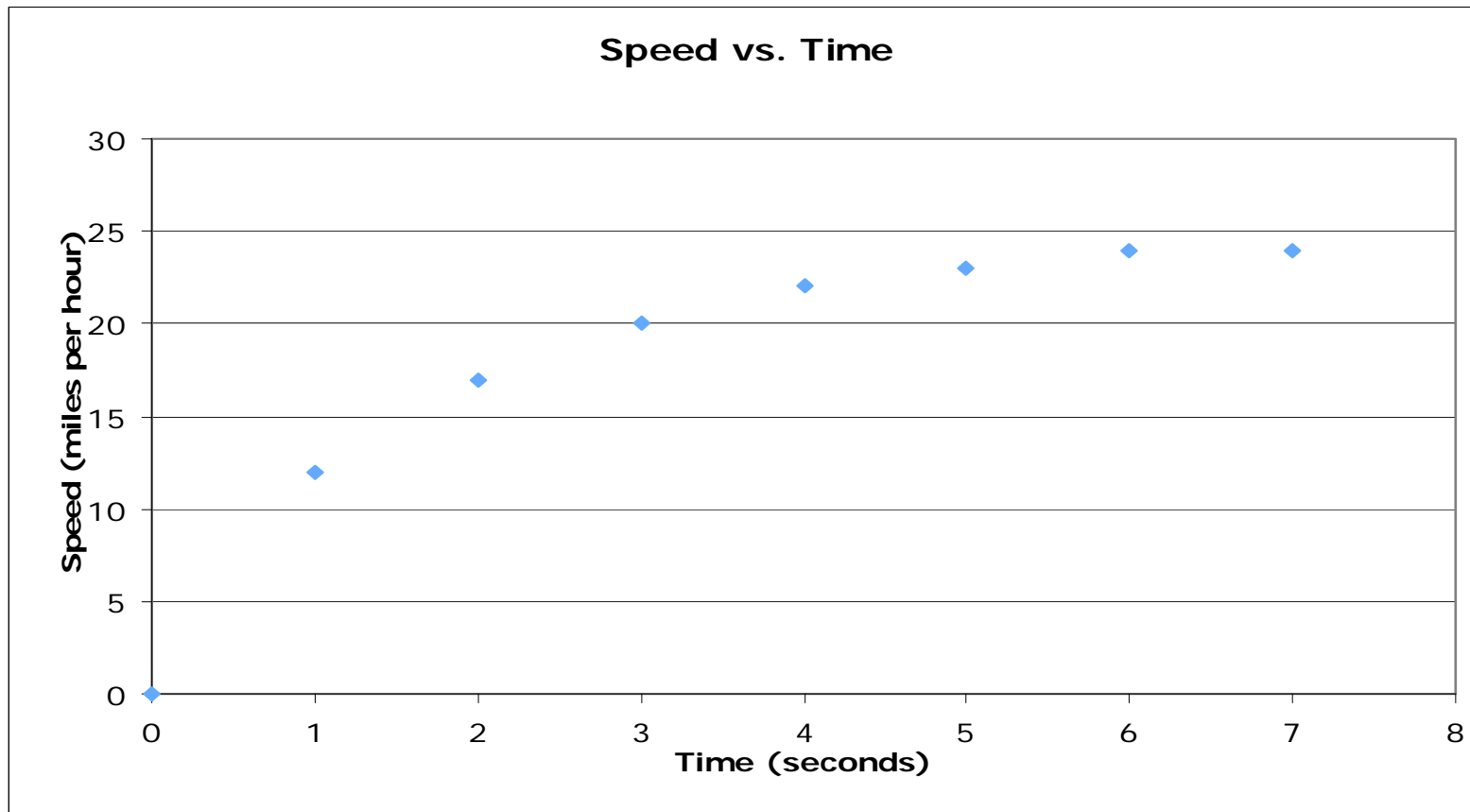




Operator Perspective



- Acceleration
 - 0-20 mph in 3 seconds





Operator Perspective



- Lighting
 - Retained stock lighting performance
- Ergonomics
 - Riding position
 - 21" seat to feet height
- Handling
 - Stiffer springs to handle increased weight



Dealer / Outfitter Perspective



- Cost
 - \$14,011 vs. \$7,263
 - \$0.05 per mi. vs. \$0.10 per mi.
- Low maintenance
- Durability
 - 3000 cycle batteries
 - Logged over 7000 vehicle miles on controller
 - Arctic insulated wire -40 F
- Ease of operation
 - no pull start
 - no warm up time
- Resale



Environmental Perspective



- Zero Emissions
- Quiet by default
 - 78 dBA at 3 ft.

Weakest sound heard	0dB
Whisper Quiet Library	30dB
Normal conversation (3-5')	60-70dB
Telephone dial tone	80dB
City Traffic (inside car)	85dB
Train whistle at 500', Truck Traffic	90dB
Subway train at 200'	95dB
<i>Level at which sustained exposure may result in hearing loss</i>	<i>90 - 95dB</i>
Power mower at 3'	107dB
Snowmobile, Motorcycle	100dB
Power saw at 3'	110dB
Sandblasting, Loud Rock Concert	115dB



Nanook EV Simplifying Electric ⚡



Photo by Jesse Hoff