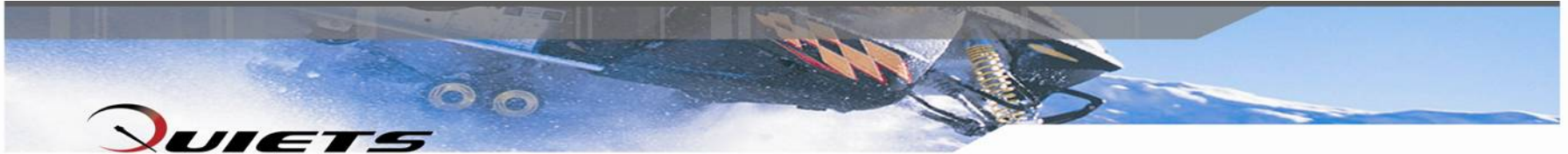


A NEW GENERATION OF DESIGN AND DEVELOPMENT



Presentation

1. Engine / Sled Choice
2. Specs
3. Combustion
4. Fuel Consumption
5. Noise



Engine Choice

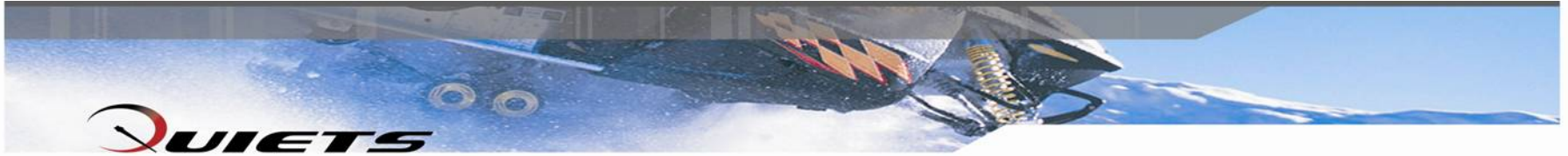
Rotax 600 cc SDI 2 Stroke



Sled Choice

2007 BRP MXZ Blizzard





Specs

2 Stroke → 4 Stroke conversion

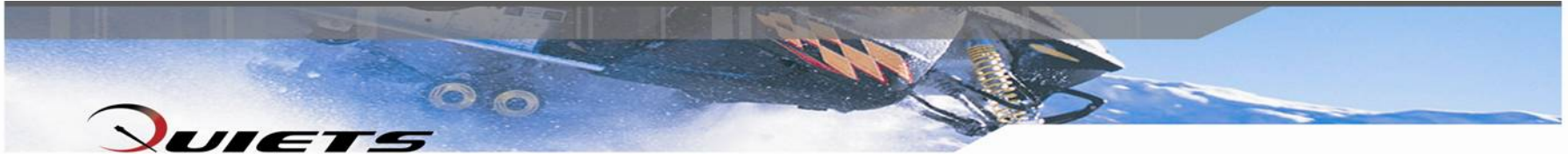
Use of a fully programmable HALTECH EX6 ECU

Engine position sensor

Use of a Hall Effect engine position sensor using 2 rare earth magnets on a custom flywheel

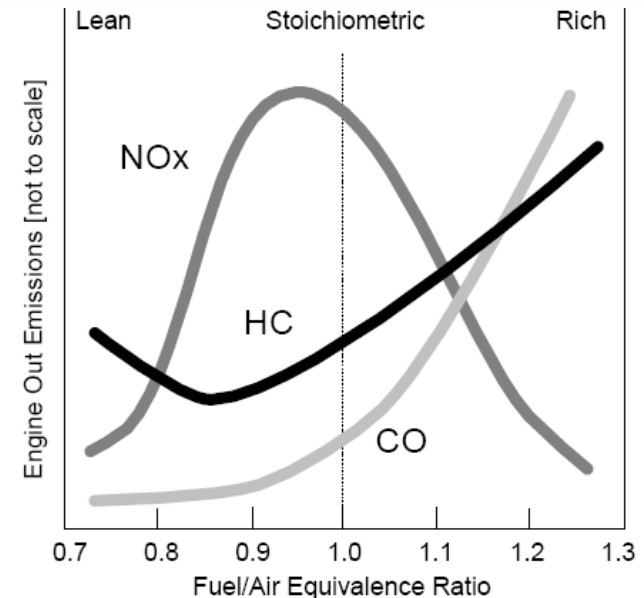
Digatron





Combustion

1. Combustion 1051°F
2. Dampening combustion chamber
3. 2 spark plugs
4. Trailing spark



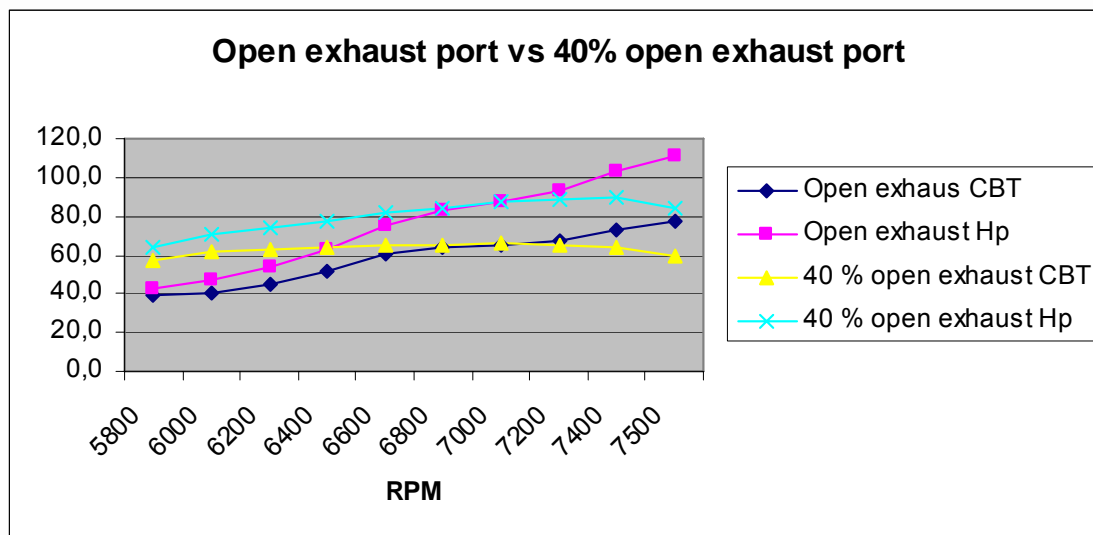


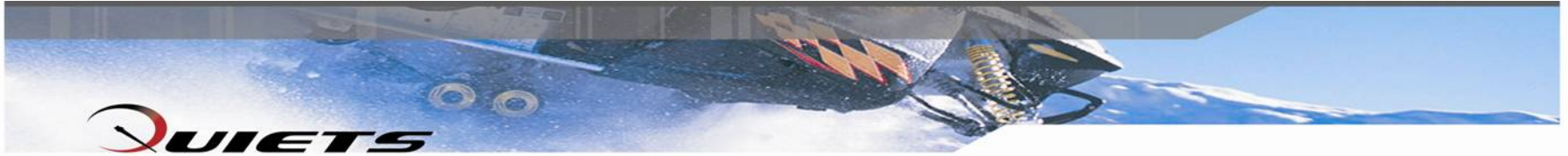
Fuel Consumption

Stock 8200 RPM → 7000 RPM

Stock 125 Hp → 90 Hp

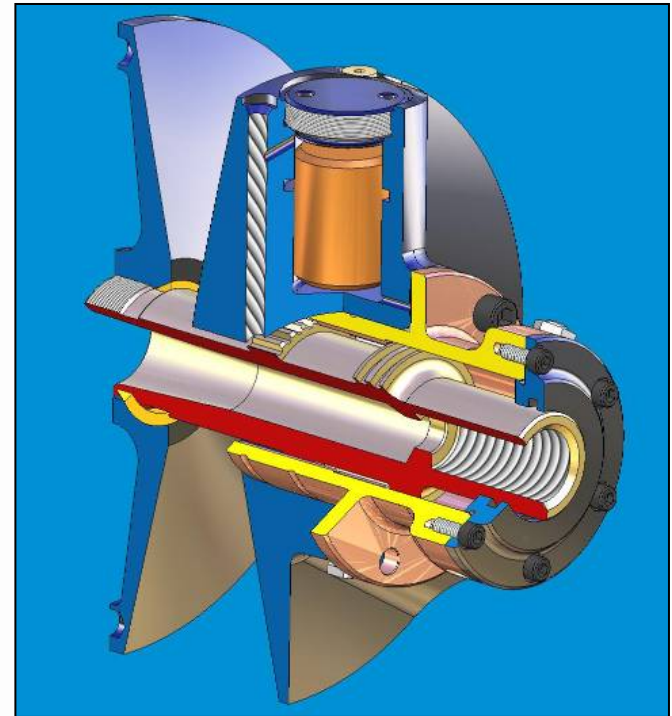
Rave 40 %

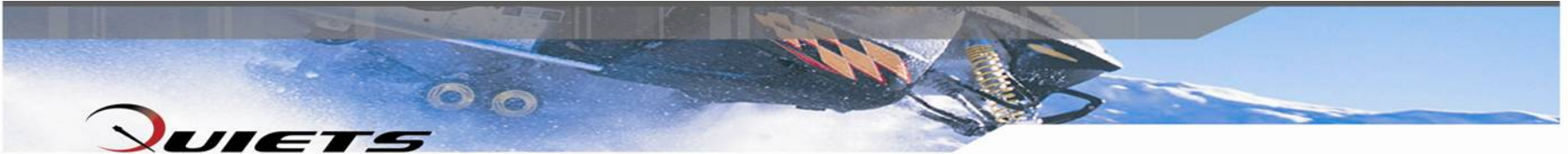




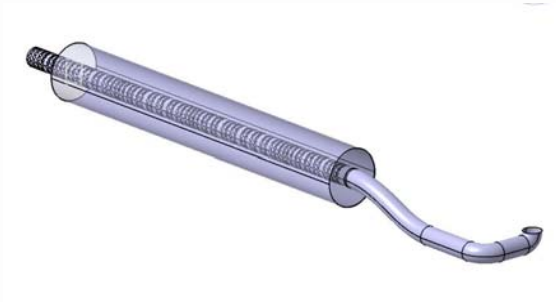
Fuel Combustion

Hydraulic Clutch





Exhaust Silencer



Wheels



Track



Soundproofing





Questions ?

